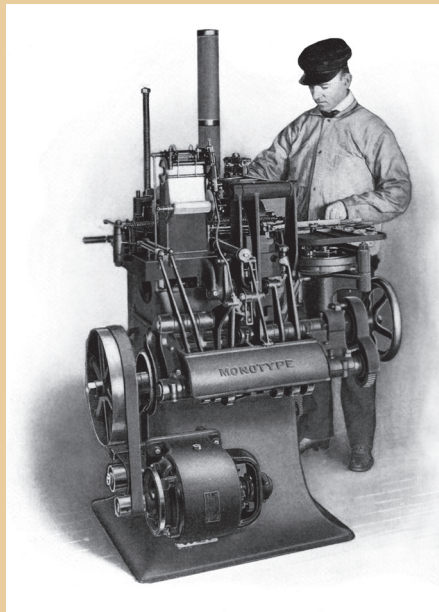


Swamp Press Price List

with Font Schemes

(Note, prices subject to change)



Swamp Press Monotype Price List

15 Warwick Road, Northfield, MA 01360
Phone (413) 345-0427 ed@swampPress.com

Machine COMPOSITION is done on a 15x15 Lanston Composition Caster from 4 to 24 point. Rates vary according to complexity, but generally run about 3 to 5 cents per en— so a 25 pica line (50 ens) is \$1.50 to \$2.50 a line. Send a sample page with specifications for an accurate quote.

METAL RETURNED will be credited at the metal charge rate: \$2/lb. A nice way to build up your type holdings is to have a job set in composition and filling up a case with redistributed type and returning the balance.

If you are MIXING new type into your cases be sure to send a cap H and lower case m for alignment.

SORTS: minimum order \$35, use border prices.

QUANTITY Discounts: 6+ fonts of same size / same face 10%

LINOTYPE fonts— see page special page

Bastard Sizes & Didot: round up to next American Point Size.

Half-Strength Fonts (36a 16A, based on 1000 pieces total; 500 lowercase)

Size	Font	Caps	Lower Case	Figs/punct	Small Caps	Swash
6	50.00	30.00	35.00	20.00	20.00	25.00
8	50.00	30.00	35.00	20.00	20.00	25.00
10	50.00	30.00	35.00	20.00	20.00	25.00
12	50.00	30.00	35.00	25.00	20.00	30.00
14	70.00	40.00	45.00	30.00	25.00	35.00
18	90.00	50.00	60.00	35.00	30.00	40.00

(lowercase comes with pts & figures)

Quarter Strength Fonts (18a 10A, based on 500 pieces total)

24	110.00	60.00	65.00	35.00		60.00
30	120.00	65.00	75.00	35.00		60.00
36	130.00	75.00	85.00	40.00		65.00

Borders, Ornaments & Dingbats

Size 6 inch line

6-12 \$10.00 (5+ lines 8 ea.)

14-18 \$11.00 (5+ lines 9 ea.)

24-36 \$15.00 (5+ lines 12 ea.)

Spaces & Quads: 6-36 point \$12 / lb. Bastard/Didot sizes \$15.00 / lb.
42-72 pt \$20 / lb

Mass Residents add 6.25% sales tax. Prices do NOT include shipping.
Shipping: depends on amount of type I use USPS Priority mail Flat Rate.

Font Schemes

Half Strength Jobbing Font (36a 16A)

a b c d e f g h i j k l m n o p q r s t u v w
36 10 16 20 58 12 10 24 36 4 6 20 14 32 32 12 4 26 32 40 18 8 10

x y z 1 2 3 4 5 6 7 8 9 0 . , ; : - ' ! ? () AE
6 10 4 16 10 10 8 8 8 8 8 10 16 20 30 6 6 8 10 4 4 10 4

OE ae oe ff fi fl ffi ffl A B C D E F G H I J K
4 4 4 6 8 6 6 6 16 6 8 10 26 6 6 12 16 4 4

L M N O P Q R S T U V W X Y Z & — \$
10 8 14 14 6 4 14 16 20 8 4 6 4 6 4 6 4 8

Quarter Strength Font Scheme (18a 10A)

a b c d e f g h i j k l m n o p q r s t u v w
18 6 8 10 28 6 6 12 16 4 4 10 6 14 14 8 4 12 14 18 8 4 6

x y z 1 2 3 4 5 6 7 8 9 0 . , ; : - ' ! ? () AE
4 6 4 10 6 6 4 4 4 4 4 8 12 14 24 6 6 6 8 4 4 8 4

OE ae oe ff fi fl ffi ffl A B C D E F G H I J K
4 4 4 6 6 4 4 2 10 4 6 6 16 4 4 8 10 4 4

L M N O P Q R S T U V W X Y Z & — \$
6 6 10 10 4 4 8 10 12 6 4 4 4 4 4 4 4 4

SMALL CAP SCHEME

A B C D E F G H I J K L M N O P Q R S T U
8 3 4 5 13 3 3 6 8 2 2 5 6 8 8 3 2 7 8 10 4

V W X Y Z &
2 3 2 3 2 2

Swamp Press Large Type Price Schedule

15 Warwick Road, Northfield, MA 01360

Phone: 413 345 0427 ed@swamppress.com

Note: 42 and 48 point may be cast on the Thompson foundry-style caster or on the Giant Caster; 60 and 72 on the Giant Caster only. For sorts prices call or email me. Spacing at \$15 / pound. Giant type has inner channels to save weight. Half-strength (16A 36 a) and quarter strength (10A 18a) fonts available upon request. Fonts with alternate characters and/or very bold or complicated script faces are extra. Ludlow fonts are extra, due to extra labor required to run them. Swash are extra.

Fonts: 1/8 Strength (9a 5A)

(a "Full" font includes: Caps, lower case, figures and points)

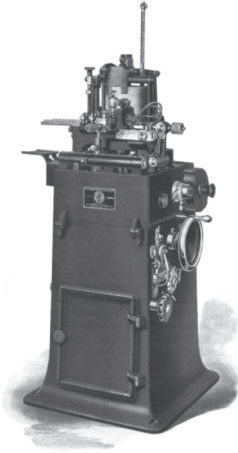
	Full	/ CAPS	/ lower case	/	figs & punctuation
42 Point:	\$200	/ \$95	/ \$120	/	\$25
48 Point:	\$235	/ \$100	/ \$130	/	\$30
60 Point:	\$250	/ \$125	/ \$140	/	\$35
72 Point:	\$280	/ \$140	/ \$150	/	\$45

1/8 Strength Font Scheme (9a 5A)

a	b	c	d	e	f	g	h	i	j	k	l	m	n	o	p	q	r	s	t	u	v	w	x	y	z	
9	4	5	6	12	5	4	6	9	3	3	6	5	9	9	4	2	9	9	9	5	3	4	2	4	2	
A	B	C	D	E	F	G	H	I	J	K	L	M	N	O	P	Q	R	S	T	U	V	W	X	Y	Z	&
5	2	4	3	6	3	3	3	5	2	2	4	3	5	5	3	1	5	5	5	3	2	2	1	2	1	2
.	,	-	'	;	:	?	!	\$	1	2	3	4	5	6	7	8	9	0								
5	5	1	3	1	1	1	1	2	3	2	2	2	2	2	2	2	2	2	2	2	2	2	2	2	4	

SWAMP PRESS LINOTYPE FEE SCHEDULE

We can cast hand-set movable type from Linotype and Intertype matrixes on the Thompson caster.



- *Due to the time-consuming nature of this work, small quantities are expensive.*

HALF-STRENGTH FONTS (36a 16A)

Single Font, caps, lowercase, points and figures

Size	Font	2 fonts
10	130.00	180.00
12	130.00	180.00
14	130.00	180.00
18	140.00	200.00

QUARTER-STRENGTH FONTS (18a 10A)

24	160.00	240.00
30	170.00	255.00
36	180.00	270.00

— Spacing Fonts —

	Ems	Ens	Thick	Mid	Thin	Hair
1/2 Strength	75	4 ^o	100	80	80	4 ^o
1/4 Strength	50	3 ^o	60	40	40	20
1/8 Strength	25	15	30	20	20	20

Generally: "Thick" = 1/3 em, "Mid" = 1/4 em, "Thin" = 1/5 em, Hair = 2 pts
 For larger sizes more set (width) sizes may be added.

We sell spaces and quads by the lb. as well as in fonts priced by the lb.

If you have a case nicely apportioned with spacing, weigh the spacing and use that as a guide to ordering.

Otherwise, if a case has say 2 caps and 4 lower case, figure on 3 or 4 fonts.

One method to determine how much spacing is required would be to count up say the lower case "a"s, then divide by the appropriate font strength, to determine the approximate number of fonts required in your type case.

For your information, a 1/2 strength spacing font of:

- 12 point weighs 0.9 lbs
- 14 pt weighs in at 1.2 lbs
- 16 pt weighs in at 1 lbs 5.8 oz
- 18 pt weighs in at 2.08 lbs
- a 1/4 Strength font of 24 pt comes to 2.4 lbs
- 1/4 36 at 5.3 lbs
- 1/4 48 at 9 lbs
- 1/8 Strength 60 pt 6 lbs 4.6 oz
- 1/8 72 pt at 8 lbs 11 oz

**** Now stocking 12, 14, 18, 24, 30 & 36 pt Paper Copper & Brasses ****